

Unit 3 Notes: "Linear Patterns in Tables and their Graphs"

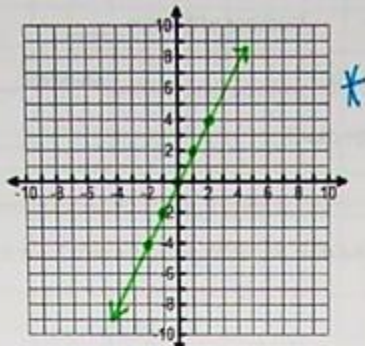
~ Unit 3 – page 16 ~

Linear Patterns in Tables and Their Graphs

Graph each table. Connect the points and extend them over the coordinate grid.

#1.

x	y
-2	-4
-1	-2
0	0
1	2
2	4



Describe the pattern in the y-column as the x-values increase by 1.

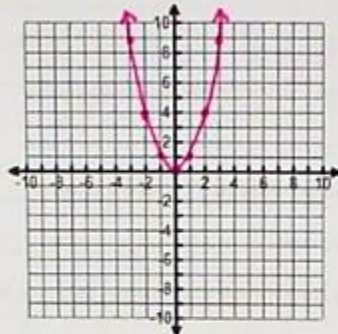
y increases by 2

Is the function linear or non-linear?

linear

#2.

x	y
-3	9
-2	4
-1	1
0	0
1	1
2	4
3	9



Describe the pattern in the y-column as the x-values increase by 1.

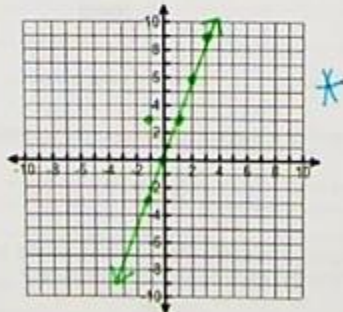
y decreases by 2 less than before until zero then the pattern reverses in an increase

Is the function linear or non-linear?

nonlinear

#3.

x	y
-1	-3
0	0
1	3
2	6
3	9



Describe the pattern in the y-column as the x-values increase by 1.

y increases by 3

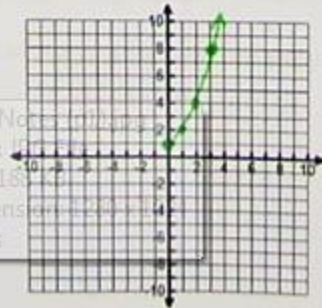
Is the function linear or non-linear?

linear

#4.

x	y
0	1
1	2
2	4
3	8
4	16

(You can't graph the last point on the given grid.)



Describe the pattern in the y-column as the x-values increase by 1.

y doubles

Is the function linear or non-linear?

nonlinear

#10 Complete each of the following tables of input-output values. Identify the pattern in the y-values and the x-values.

a. $y = 2x$

x	-4	-2	0	2	4	6
y	$2(-4)$ -8	$2(-2)$ -4	$2(0)$ 0	$2(2)$ 4	$2(4)$ 8	$2(6)$ 12

b. $y = -2x$

x	-3	-2	-1	0	1	2
y						

c. $y = -3x$

x	-4	-2	0	2	4	6
y	$-3(-4)$ 12	$-3(-2)$ 6	$-3(0)$ 0	$-3(2)$ -6	$-3(4)$ -12	$-3(6)$ -18

d. $y = 3x$

x	-3	-2	-1	0	1	2
y						

e. $y = 4x$

x	-6	-3	0	3	6	9
y						

f. $y = -5x$

x	-6	-4	-2	0	2	4
y						

Describe the pattern for the x-values

x increases by 2

Describe the pattern for the y-values

y increases by 4

Describe the pattern for the x-values

Describe the pattern for the y-values

Describe the pattern for the x-values

x increases by 2

Describe the pattern for the y-values

y decreases by 6

Describe the pattern for the x-values

Describe the pattern for the y-values

Describe the pattern for the x-values

Describe the pattern for the y-values

Describe the pattern for the x-values

Describe the pattern for the y-values

